

Introducing

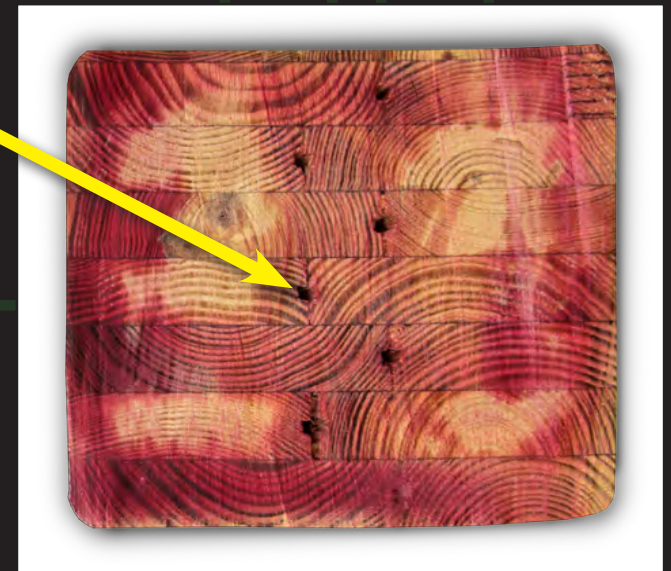
PentaTrate™

US and Canadian Patent Pending Glu-lam Manufacturing Process

A good product...

The PentaTrate™ edge grooves allow preservative treatment to penetrate the full length, inner zone of multi-layup E-LAM® laminated wood poles

...just got BETTER!



Available Exclusively with



Laminated Wood Poles

Preserves the Pole from the Inside-Out!



Laminated Wood Systems, Inc.

Seward, Nebraska • 800-949-3526 • www.lwsinc.com

PentaTrate™ is the *NEW standard* in laminated wood pole protection!

US and Canadian Patents Pending



Previous Standard
Cross Section



PentaTrate™
Cross Section

Standard glu-lam design allows for sufficient preservative treatment around the unglued edge joints in the inner zone. The PentaTrate™ design results in *exceptional* preservative penetration... making a great product even better!

No Visible Difference in the Field



Previous Standard



PentaTrate™

Tracking Preservative Penetration of the PentaTrate™ Treatment Design

SCOPE: This test was designed to track and verify the effectiveness of the patent-pending edge groove manufacturing design known as PentaTrate™ on multiple lay-up poles. The purpose of the design is to allow interior preservative treatment to migrate the entire length of the pole during the pressure treating process.

METHOD: An E-LAM® PEL-H1-120 pole that had been damaged at the treating plant was used for the forensic inspection. The damaged section of the pole was cut off, leaving a 100 ft. section of pole for inspection. Using the large end of the pole as a starting point, the pole was cut at 10' increments. A treatment sensitive substance known as Oil-Red was applied to visually highlight the presence of preservative treatment in the wood sections. Random sections throughout the pole were photographed for documentation.

CONCLUSION: Inspection of the cut sections revealed good perimeter penetration, as well as very good inner penetration surrounding the PentaTrate™ grooves the entire length of the pole. The PentaTrate™ grooves successfully facilitate the migration of preservative in the inner section the entire length of the pole.



10' Section Cut



30' Section Cut



50' Section Cut



70' Section Cut



90' Section Cut



Laminated Wood Systems, Inc.
Seward, Nebraska • 800-949-3526 • www.lwsinc.com

