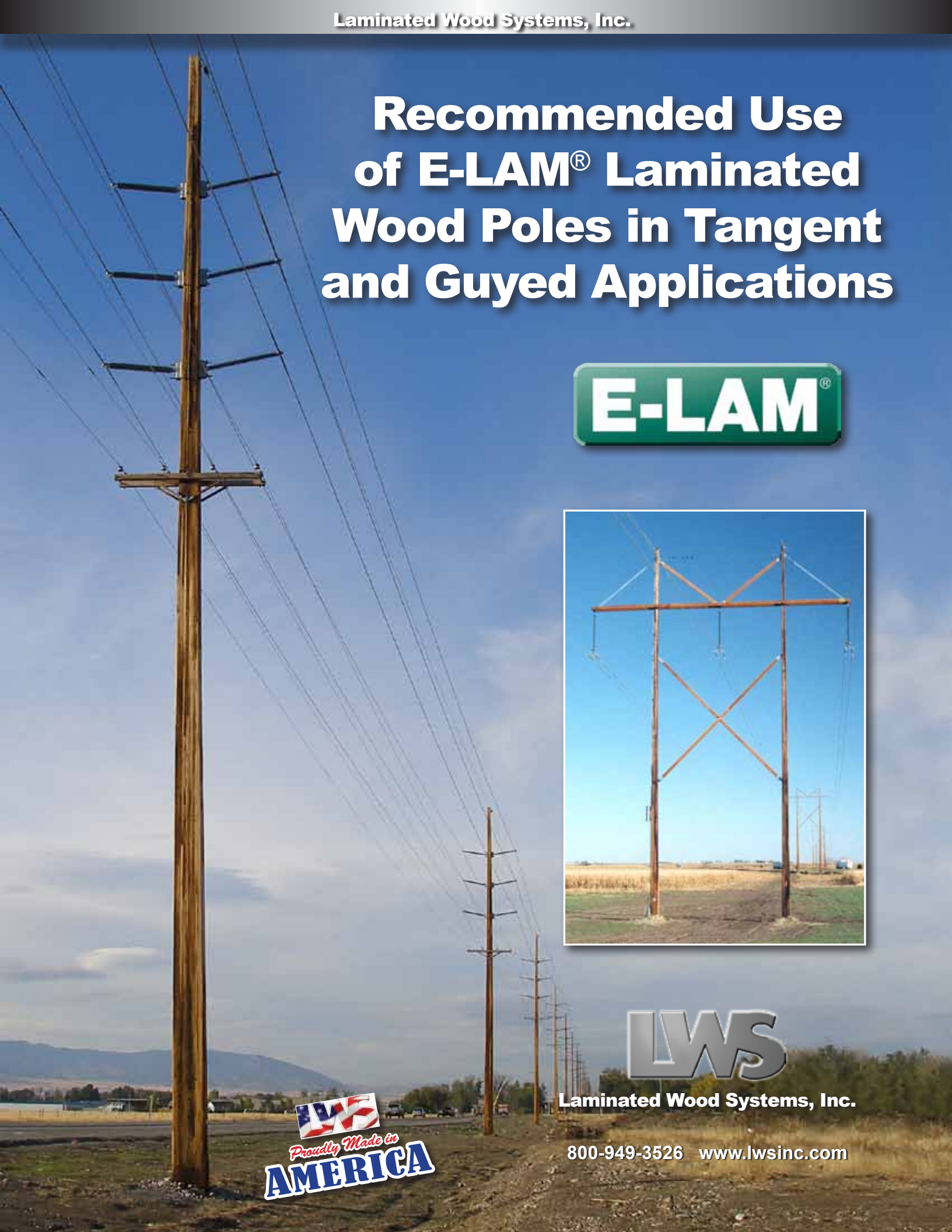
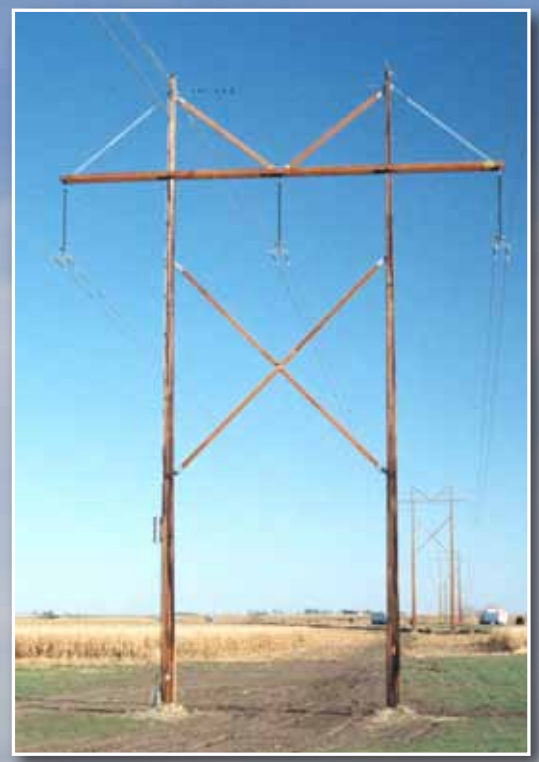


# Recommended Use of E-LAM<sup>®</sup> Laminated Wood Poles in Tangent and Guyed Applications



Laminated Wood Systems, Inc.

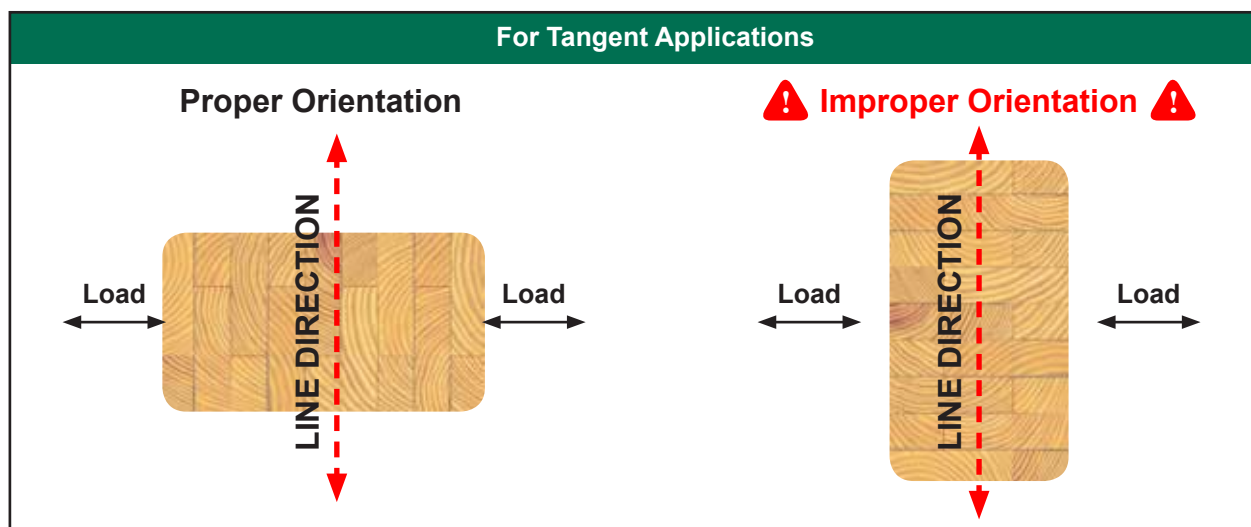
800-949-3526 [www.lwsinc.com](http://www.lwsinc.com)



## When Can E-LAM® Poles Be Substituted for Round Wood?

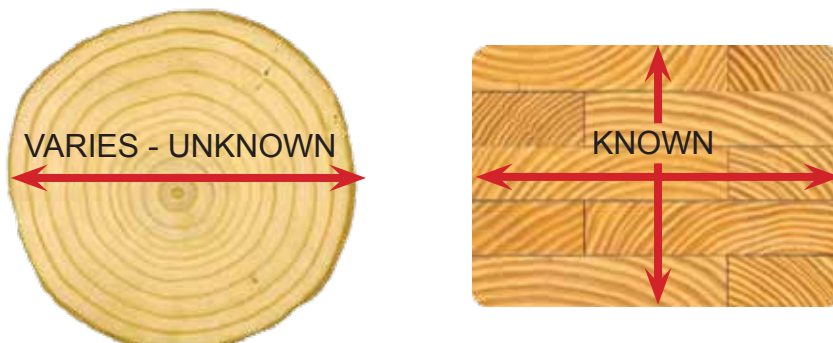
### No Engineered Pole (steel, concrete, composite or laminated) is Completely Interchangeable with Round Wood Poles

E-LAM® poles can be substituted for round wood class equivalent poles when used properly. The primary difference between a laminated wood pole and a round wood pole is the fact that a round wood pole has the same strength rating in all (360°) directions, while a rectangular laminated pole is strongest in the transverse direction. As long as laminated poles are oriented in a straight line, tangent direction, they can be substituted for the same round wood class equivalent size pole, provided they meet the extreme wind requirements of NESC Rule 261.A. LWS makes no claims that the rectangular poles can be used in every application that a symmetrically round pole is used. We recommend LWS engineers review the applications to confirm the fitness of use for any non-tangent application.

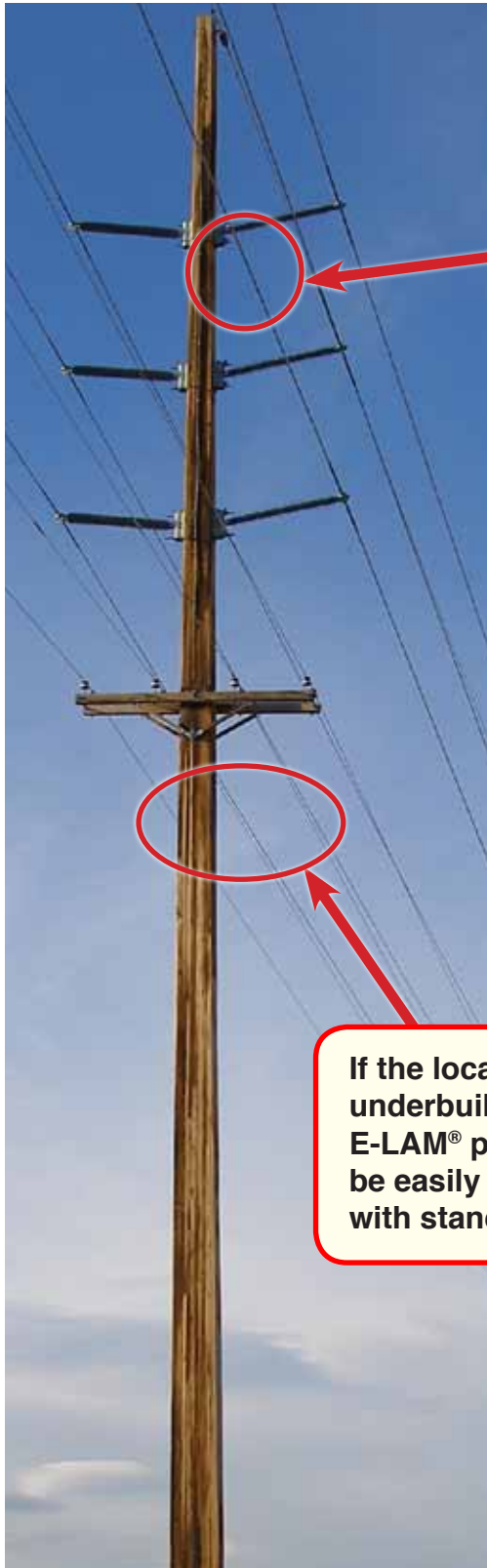


### Take Advantage of the Attributes of E-LAM® Poles Combined with the Engineering Expertise of LWS

Unlike round wood poles, E-LAM® poles are consistent in strength and dimension, insuring that all bolts and attachment hardware will fit. There's no need to buy extra hardware because of varying pole diameters. LWS supplies certain special hardware items and adapter plates that can accommodate virtually every hardware attachment application. However, there are some incompatibilities with certain standard round wood pole line hardware items such as pole bands and guying attachments.



## Why Buy an Un-drilled Pole?... E-LAM® Structures are Pre-drilled and Include Mounting Hardware



Post insulator shims convert standard post insulators to the flat surface of the pole.



LWS engineers specify the proper size of all bolts, hardware, arms and braces.

If the location of an underbuild changes, E-LAM® poles can be easily field drilled with standard tools.

E-LAM® poles are pre-drilled and ready for quick assembly and installation in the field.



## E-LAM® Structures Eliminate the Guesswork for Hardware Sizes on Guyed Dead End and Angle Applications



Round wood poles vary in diameter at the various guying locations which results in the need for excess pole band sizes. When E-LAM® poles are used in guyed applications, there is no guesswork involved when determining the guy attachment hardware and bolt lengths.

It is not recommended that laminated wood poles be used with down guys unless LWS engineers have analyzed the loading criteria and recommended the properly sized pole.

LWS makes no claims that the rectangular poles can be used in every application that a symmetrically round pole is used. We recommend LWS engineers review the applications to confirm the fitness of use for any non-tangent application.



**LWS offers guying plates and dead end tees for use on E-LAM® poles used in guyed applications.**



**Laminated Wood Systems, Inc.**

**800-949-3526 [www.lwsinc.com](http://www.lwsinc.com)**